



# GAT MONTHLY MEMBERSHIP PROGRESS REPORT

Results as of: 9/30/2021

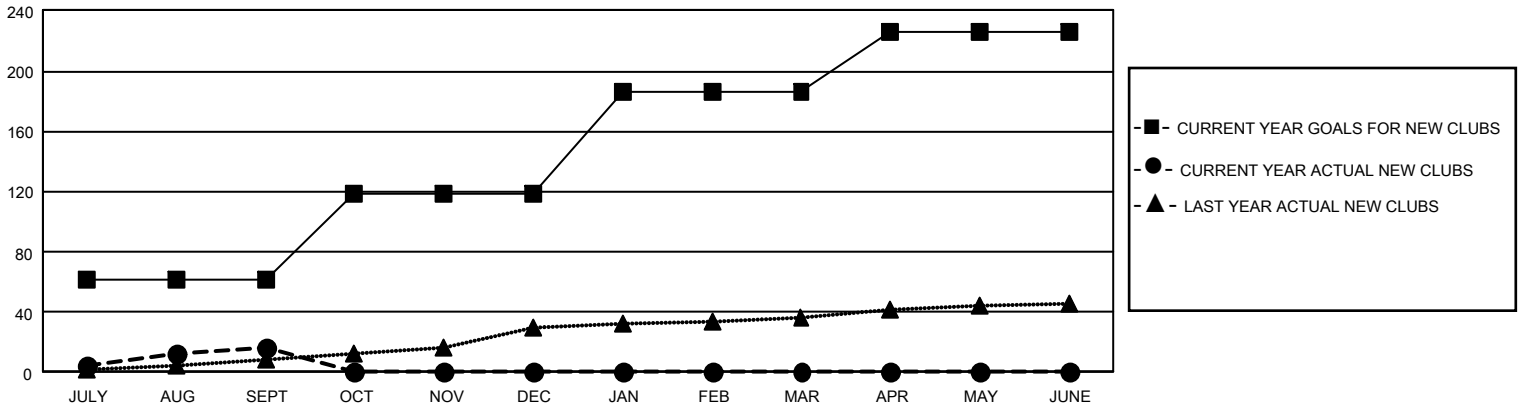
## GAT Constitutional Area 5 - Korea

REPORT DOES NOT INCLUDE CLUBS IN UNDISTRICTED AREAS.

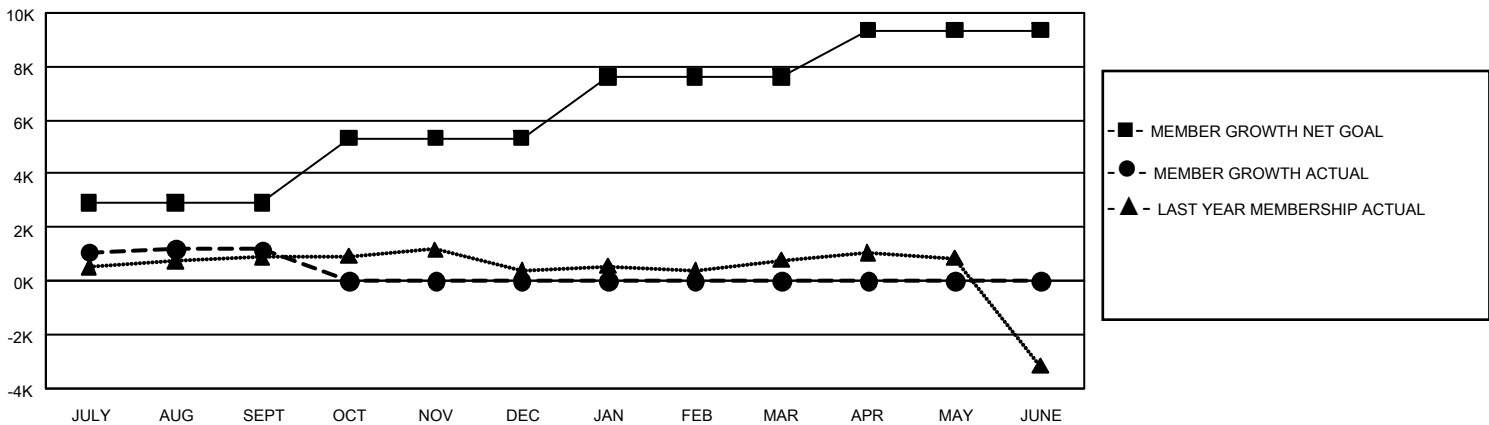
Clubs			
RESULTS FOR 2021-2022			
QUARTER	NEW CLUB GOAL	NEW CLUBS	DROPPED CLUBS
JULY/AUG/SEPT	183	16	27
OCT/NOV/DEC	174	0	0
JAN/FEB/MAR	201	0	0
APR/MAY/JUNE	120	0	0

Members			
RESULTS FOR 2021-2022			
QUARTER	MEMBER GROWTH NET GOAL	MEMBER GROWTH ACTUAL	DROPPED MEMBERS ACTUAL (including transfers)
JULY/AUG/SEPT	2925	3,743	2,365
OCT/NOV/DEC	2400	0	0
JAN/FEB/MAR	2293	0	0
APR/MAY/JUNE	1738	0	0

GOALS AND ACTUAL NEW CLUBS CUMULATIVE



GOALS AND ACTUAL MEMBERS CUMULATIVE



DROPPED CLUBS: 27

906 CLUBS OF 2,055 ADDED 1 OR MORE NEW MEMBERS

GENDER DISTRIBUTION

MALE	55,495 (74.84%)
FEMALE	18,659 (25.16%)
NON BINARY	0 (0.00%)
PREFER NOT TO ANSWER	0 (0.00%)

DROPPED MEMBERS

[CLICK HERE FOR CUMULATIVE MEMBERSHIP DATA](#)

DECEASED	60
CLUB CANCELLED	278
OTHER	2,027
<b>TOTAL</b>	<b>2,365</b>

TOTAL FAMILY UNIT MEMBERS	5,885
FAMILY MEMBERS PAYING HALF DUES	3,432